



Installation Instructions for the Sargent & Greenleaf **ADJUSTA-LOC®**

D041
R162

Nomenclature

ADJUSTA-LOC®

The "ON THE JOB LOCK" for in the field replacement installation. Completely adjustable for hand and door thickness from 1/2" to 3-1/2".



RIGHT HAND



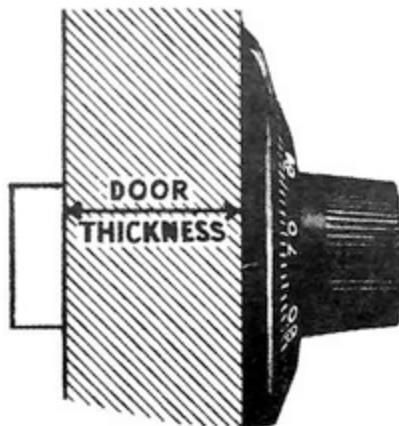
LEFT HAND



VERTICAL UP



VERTICAL DOWN



HOW TO SET HANDLING OF LOCK

R6730 and 6735

8550 and 8560 and 8565MP

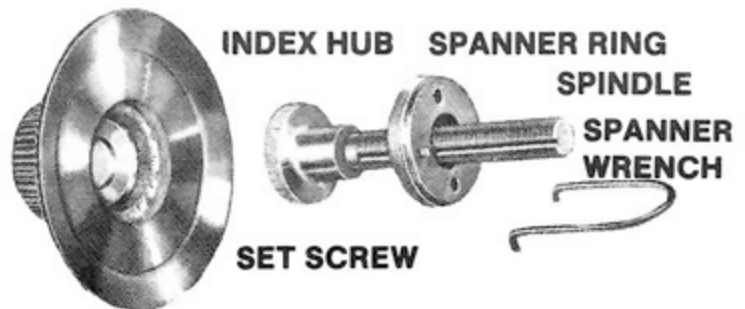
These locks are equipped with the S&G 4 way drive cam. This feature allows the 4 hand positions of Right Hand—Left Hand—Vertical Up and Vertical Down by having 4 spline key ways in the drive cam, or 2 spline key ways on the cam and the spindle.



T8410 and 8415 and

8430 and 8435MP

These locks are equipped with the universal "centispline" dial. The "Centi-Spline" dial is constructed with a removable spindle that can be positioned to any one of 100 settings that correspond with the dial graduations. This permits the spline to be positioned to any hand condition.



**SPLINE
(NUMERICAL LOCATION)**

Right Hand Left Hand Vertical Up Down

8400 "MP" Series

39 89 64 14

STEP 1...to disassemble lock

1. Make sure Bolt is in the locked or engaged position.
 - A. For R6730, T8410MP and 8550 and 8560 simply pull bolt with fingers.
 - B. For R6735 and 8555 and 8565MP turn dial to the left 4 times, stop at random.
 - C. For T8415 and 8435MP turn dial left to "0". Turn knob in center dial to "0" and turn dial left 4 times, stop at random.
2. Remove cover.

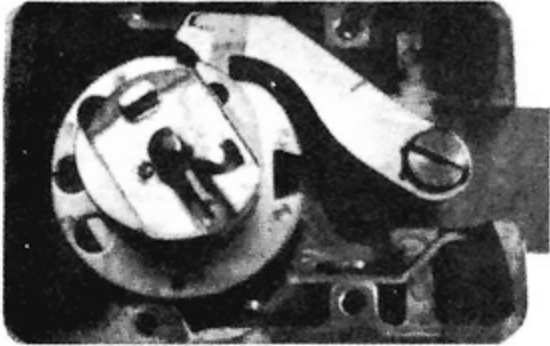


Fig. 1

Drive Cam
Inner
Spindle
Spline Key

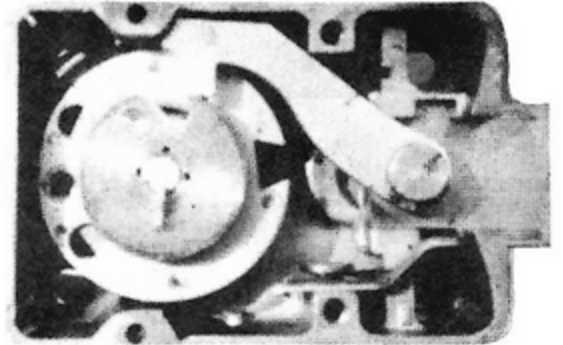


Fig. 2

3. For T8415 and 8435 only: pull out inner spindle until free from lock. (See Fig. 1)
4. For R6735, T8415MP and 8435 supplied with tubes, the following procedure applies.
 - A. Remove Spline Key with care by pulling Spline Key straight out of lock by gripping firmly with pliers.
CAUTION: If Spline Key is twisted, bent, or deformed, then a new Spline Key must be used.
Note position of spline key. (T8410, 8415, 8430, 8435MP see Fig. 1) and (R8550, 8555, 8560, 8565MP Fig. 2).

REMOVE DIAL:

- B. Unscrew DIAL by holding DRIVE CAM and turning DIAL LEFT (counter-clock-wise).
- C. Remove DIAL RING.



Fig. 3

STEP 2...to install lock

For R6735, T8415MP and 8435 supplied with tubes, the following procedure applies.

1. Insert TUBE and hold lock against mounting plate.
2. Measure tube excess from door. (See Fig. 4).
3. Remove lock and cut off excess. (Leave 7/64" above door).
4. File end of tube smooth.
5. Place lock back on door and install dial ring. For R6730, T8410MP and 8550 and 8560 supplied without tubes omit the foregoing procedure. Screw dial ring to door and align with hole through door.
6. Securely fasten lock to mounting plate by installing the 4 lock attaching screws and tightening.



Fig. 4

STEP 2...continued

7. Determine proper spindle length. (For all except 8400 Series Manipulation Proof locks)

- A. Thread the dial into the drive cam until it is snug.
- B. Measure the excess and cut off. (See Fig. 5)
- C. FOR 8400 SERIES MANIPULATION PROOF LOCKS.
 - a. Insert dial into dial ring and hold snug.
 - b. Measure excess from the wheel post (See Fig. 6) and cut off. CAUTION: Leave 1/16" above the wheel post.

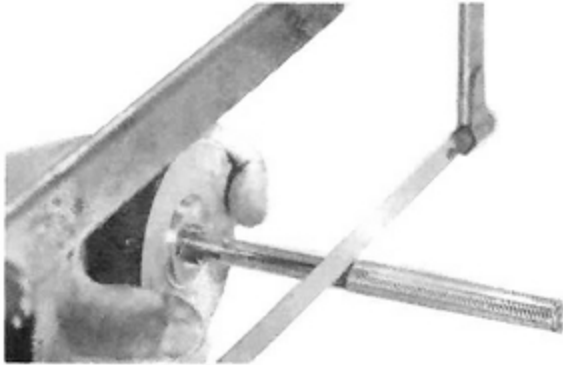
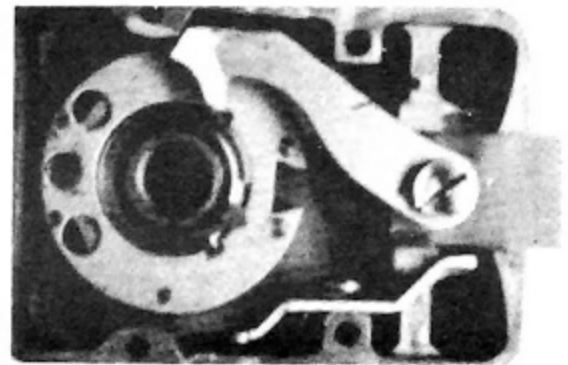


Fig. 5



Wheel Post

Fig. 6

8. Screw drive cam on spindle until snug (Spindle should be flush with top surface of cam when possible), back off cam until spline of spindle and handing spline of cam are aligned to handing required. (See Fig. 9)

- A. Insert Spline Key - flag portion of Spline Key should be positioned over cam (Fig. 9). This applies to all models. (See Fig. 1 and Fig. 2) Drive Spline Key in very carefully. Always use a new Spline Key. If the Spline Key becomes loose, the lock will not function properly. Make certain it is tight.

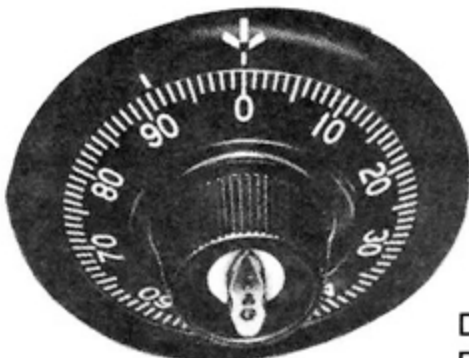
9. For T8410 and 8430 and 8435MP locks only: (inner spindle)

- A. Cut off amount equal to that removed from spindle. Spindle excess can be inserted over inner spindle for ease of measurement.
- B. Turn dial to "0" and point knob to "0". (See Fig. 7)
- C. Insert inner spindle. Make sure the tip of the inner spindle seats properly into hole in cam. (See Fig. 8)

Note position of flag portion over the cam body.



Fig. 9



Knob

Fig. 7

Tip of Inner Spindle Must Seat in Cam

D041
R162

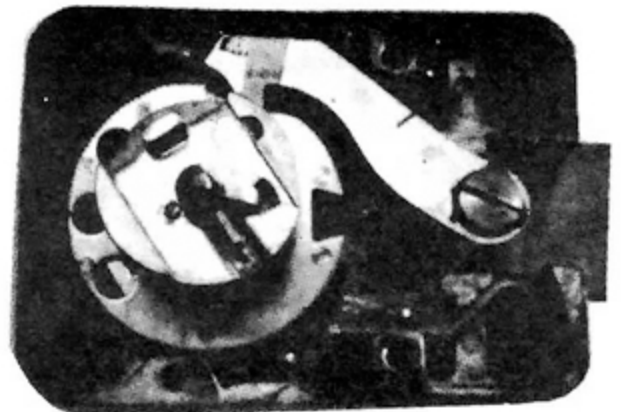


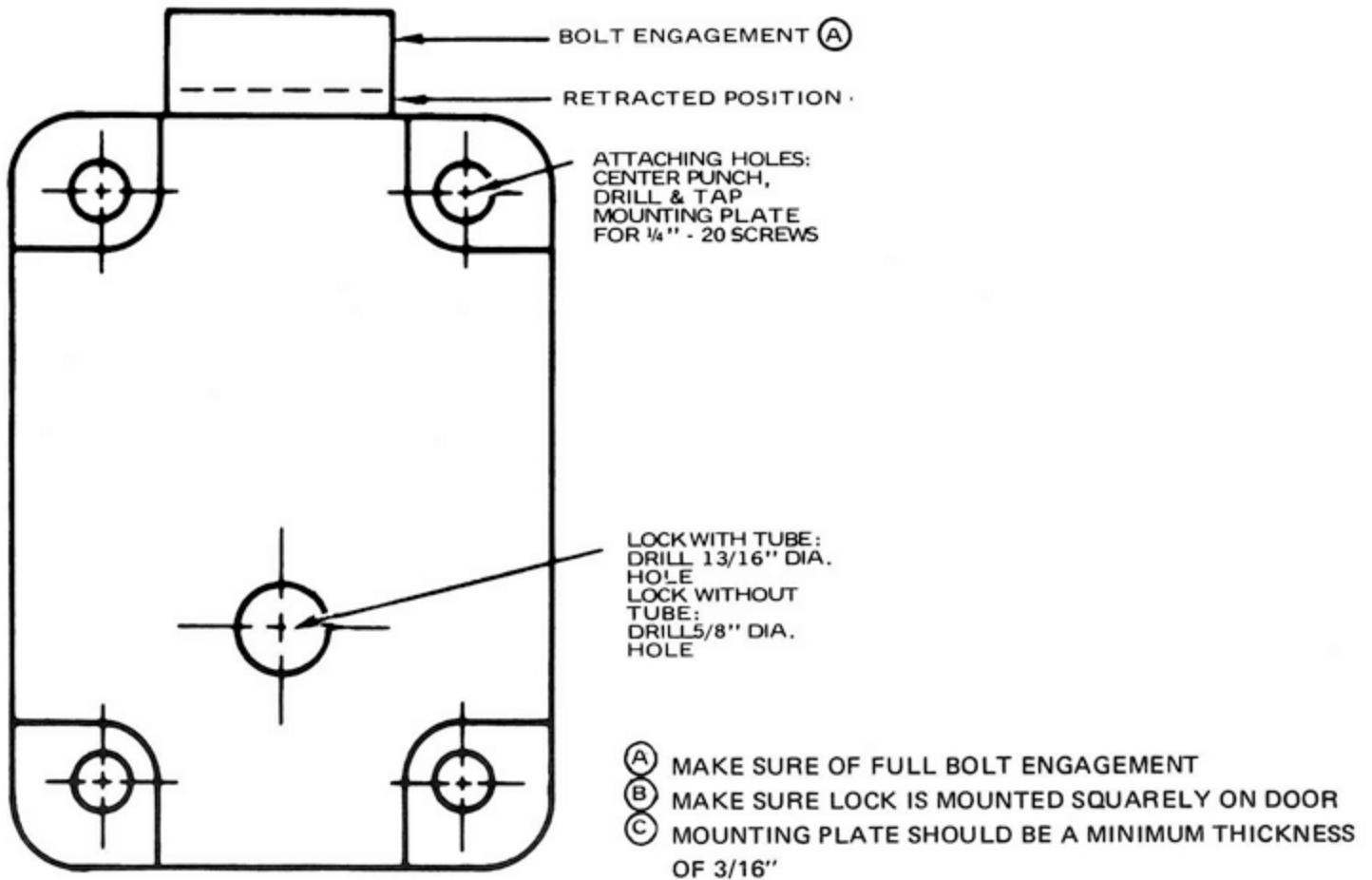
Fig. 8

10. Replace lock cover and screws.

11. Follow operating and changing instructions supplied with your lock. Try the combination at least 3 times before locking door.

Full Size Template:

"R" & "MP" SERIES ONLY



Helpful Hints

1. Always reset combination after installing the lock or after servicing.
2. Try new combination several times before closing door.
3. Make sure all screws are tight.
4. Only M.P. Manipulation Proof locks have the inner spindle shown in illustration.
5. To remove the spline key: Use a pair of regular pliers or side cutters, pull spline key slowly and straight. If you should break a spline key, make a small punch, .040 wide by .062 and carefully drive the broken portion on through, until you can unscrew the cam. Replace with a new key.