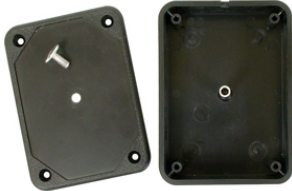


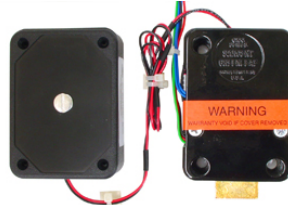


S&G Lock Models 6126, 6127, 6128, and 6129 Optional Battery Box Installation

Sargent and Greenleaf lock models 6126, 6127, 6128, and 6129 provide for two 9-volt batteries located inside the keypad. If you prefer to locate the batteries inside the safe, you may use this Battery Box Kit to do so. The kit includes a specially designed keypad, battery box, cables, and documentation. These instructions show you how to install the battery box and connect it to the keypad. For instructions on how to install the lock and keypad onto the safe, please refer to the installation instructions included with your lock and original two-battery keypad.



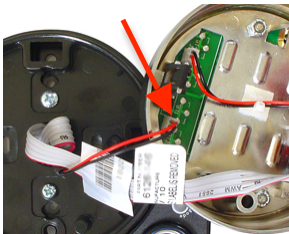
1. Remove the single screw in the center of the battery box cover and take the cover off of the box. Set the screw and the cover aside for now.



6. Place the cover on the box and secure with the screw you removed earlier. Be sure to secure the power cable near the battery box using a wire tie and tie block. Pull the tie tight so that it will act as a wire strain relief.



2. Select a good battery box location on the back of the safe door, inside the safe. Make sure the power wires from the lock body will reach it, and that the wires will not come into contact with moving parts. Use the included alcohol pad to clean the safe surface where the box is to be mounted, then peel the protective backing from the double-stick tape pads on the back of the battery box, and mount it to the safe. Press firmly into place.



3. Using the end of the battery cable with a single connector, run just enough cable from inside the safe through the spindle hole to be able to connect to the keypad. Plug the battery cable connector into the keypad receptacle as shown.



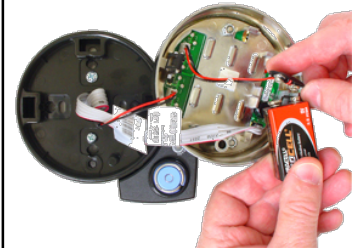
4. Inside the safe, bundle and secure any excess cable inside the safe using wire ties and tie blocks. Connect two 9-volt batteries to the battery connectors at the end of the cable.

If the Internal Battery Loses Power Use This Procedure to Open the Lock

1. Remove the keypad by pulling it away from its base, starting at the bottom. It is held to the plastic base by spring clips.



2. Once the keypad is free of its base, connect a fresh 9-volt battery to the empty battery connector located on the underside of the keypad.



3. You can enter the lock's code while holding the keypad in your hand. Open the safe to gain access to the battery box, and change the batteries. S&G strongly recommends Duracell® alkaline or Procell® alkaline batteries.

4. After replacing the battery box batteries, you can disconnect the keypad battery and replace the keypad on its base. Be very careful to avoid pinching any wires when installing the keypad back on its base.



5. Place the batteries inside the box. Make sure the power cable is in the slot at the end of the battery box before placing the cover on the box.

Sargent & Greenleaf, Inc.
A Wholly Owned Subsidiary of Stanley Security Solutions, Inc.
PO Box 930, Nicholasville, KY 40356
Phone: (800)-826-7652 Fax: (800)-634-4843
Phone: (859)-885-9411 Fax: (859)-887-2057

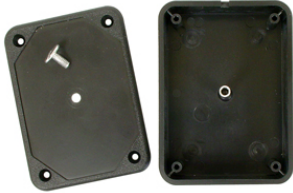


Sargent & Greenleaf S.A.
9, chemin du Croset
1024 Ecublens, Switzerland
Phone: +41-21 694 34 00
Fax: +41-21 694 34 09

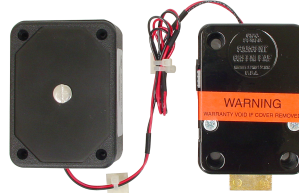


S&G Lock Models 6124 and 6125 Optional Battery Box Installation

Sargent and Greenleaf lock models 6124 and 6125 provide for two 9-volt batteries located inside the keypad. If you prefer to locate the batteries inside the safe, you may use this Battery Box Kit to do so. The kit includes a specially designed keypad, battery box, cables, and documentation. These instructions show you how to install the battery box and connect it to the keypad. For instructions on how to install the lock and keypad onto the safe, please refer to the installation instructions included with your lock and original two-battery keypad.



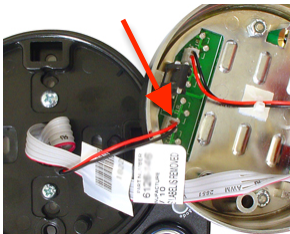
1. Remove the single screw in the center of the battery box cover and take the cover off of the box. Set the screw and the cover aside for now.



6. Place the cover on the box and secure with the screw you removed earlier. Be sure to secure the power cable near the battery box using a wire tie and tie block. Pull the tie tight so that it will act as a wire strain relief.



2. Select a good battery box location on the back of the safe door, inside the safe. Make sure the power wires from the lock body will reach it, and that the wires will not come into contact with moving parts. Use the included alcohol pad to clean the safe surface where the box is to be mounted, then peel the protective backing from the double-stick tape pads on the back of the battery box, and mount it to the safe. Press firmly into place.



3. Using the end of the battery cable with a single connector, run just enough cable from inside the safe through the spindle hole to be able to connect to the keypad. Plug the battery cable connector into the keypad receptacle as shown.



4. Inside the safe, bundle and secure any excess cable inside the safe using wire ties and tie blocks. Connect two 9-volt batteries to the battery connectors at the end of the cable.



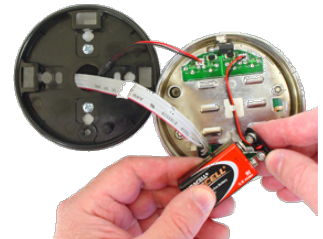
5. Place the batteries inside the box. Make sure the power cable is in the slot at the end of the battery box before placing the cover on the box.

If the Internal Battery Loses Power Use This Procedure to Open the Lock

1. Remove the keypad by pulling it away from its base, starting at the bottom. It is held to the plastic base by spring clips.



2. Once the keypad is free of its base, connect a fresh 9-volt battery to the empty battery connector located on the underside of the keypad.



3. You can enter the lock's code while holding the keypad in your hand. Open the safe to gain access to the battery box, and change the batteries. S&G strongly recommends Duracell® alkaline or Procell® alkaline batteries.

4. After replacing the battery box batteries, you can disconnect the keypad battery and replace the keypad on its base. Be very careful to avoid pinching any wires when installing the keypad back on its base.

Sargent & Greenleaf, Inc.
A Wholly Owned Subsidiary of Stanley Security Solutions, Inc.
PO Box 930, Nicholasville, KY 40356
Phone: (800)-826-7652 Fax: (800)-634-4843
Phone: (859)-885-9411 Fax: (859)-887-2057



Sargent & Greenleaf S.A.
9, chemin du Croset
1024 Ecublens, Switzerland
Phone: +41-21 694 34 00
Fax: +41-21 694 34 09