

6300

Electronic Safe Management System

Maximizing security through easy-to-use technology.

The **6300** system is one of Sargent & Greenleaf's most comprehensive safe locks. Utilizing technology to provide improved security solutions, the **6300** system leads the way in container security management either as a stand-alone product or as part of a total security system. Underwriters Laboratories Listed Type 1.

Special Features:

- Designed for one- and two-door safes; the **6300** system has the capability to control two independently programmed safe locks from a single input panel.
- "Audit Trail" helps to deter internal theft by providing detailed activity information on safe access and programming, maintaining records of up to 500 events.
- Multiple Time Lock settings provide maximum non-business hours security.

*The S&G® 6300 system – high performance,
easy-to-use security for multiple door
applications.*



Powerful Safe Management

- Employee PIN codes can be added and changed quickly and easily at the input panel (keypad) or from your PC.
- Variable Time Delay settings help to deter robbery.
- "Duress Code" feature sends an undetected call for help when connected to your alarm system.
- Up to 20-user capability, dual control for greater security and added control for handling multiple shifts.
- Can be integrated with your existing security systems.

6300 Electronic Safe Management System

Now take control and manage your safe easily!

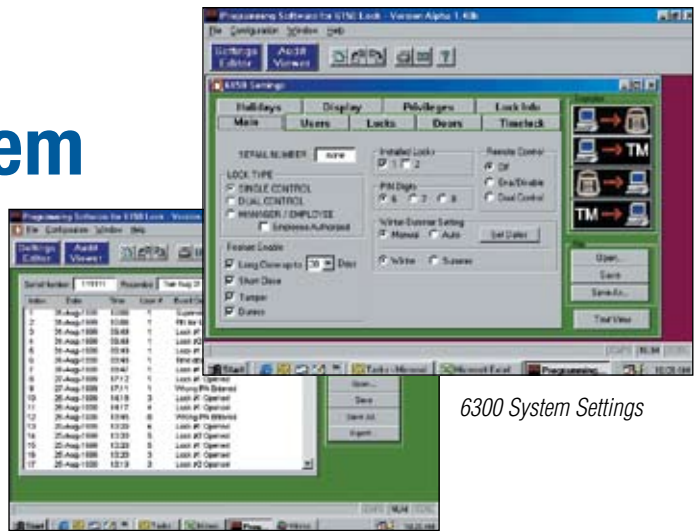
Management Controls. The **6300** system has the following access options: standard PIN code entry which opens the lock in less than ten seconds, or use a PIN code and "Touch Memory" key for added security. Dual control feature is available and requires two separate PIN codes to open. The **6300** system also provides for a Management/Employee mode allowing a supervisor code to enable and disable user PIN codes. The **6300** system's LCD displays either English or Spanish messages and menus.

Access Control Features. The **6300** system has a variety of access control capabilities. "Time Lock" provides time-controlled security where no PIN codes will open the lock until the specified time has elapsed. This feature can be set for seven-days-a-week with each day having four closing and opening periods per day. A "Time Delay" feature helps deter robberies, and there are 20 programmable dates and times for restricting access to accommodate scheduled holiday closings. A "remote" connection is available for offsite integration.

Easy to Program. Setting all of the lock's users and operating codes is done easily and quickly with Windows 95, Windows 98, Windows ME, Windows 2000 and Windows XP-based applications. Once all the settings and user privileges have been entered, simply download the information to all of the locks in your system via a direct connection to the PC or by using the convenient and portable Dallas iButton key.



Input Panel, Electronic Control Unit, and Locks



6300 System Settings

Audit Trail Events

Personnel PIN code changes or deletions can be made right at the input panel giving you immediate control when employees quit or are terminated.

Audit Trail. The **6300** system tracks the time and date when the safe was accessed and when program changes were made. Managing this audit trail information is done effortlessly with the same software program used for setting up the lock. Downloading audit trail data from the lock can be done by a direct connection to a PC or via a "Touch Memory" key. Plus, for a quick check it can be viewed at the input panel's LCD. Events are recorded continuously and up to 500 can be stored at any one time.

"Duress" Silent Alarm Protection. If employees are forced to open the safe, they can initiate an *undetected* call for help from the keypad. This activity will also be recorded in the Audit Trail feature, adding another level to your security solutions. (Note: The Duress option is only available when the **6300** system has been properly connected to an alarm system.)

The Support of the Industry Leader. S&G is one of the world's largest safe-lock manufacturers and offers the broadest array of high-security combination safe locks, both electronic and mechanical. Our products meet the highest quality and manufacturing standards in the world including ISO 9001:2000, U.L.® and other worldwide certifications. Bring us your security challenges and let us work with you to create the solutions that are right for you.

Protect your assets with the 6300 electronic locking system.

www.sargentandgreenleaf.com

Corporate Headquarters: One Security Drive • Nicholasville, Kentucky 40356 • USA • Tel. 859-885-9411, Fax 859-887-2057

European Headquarters: 9, chemin du Croiset • 1024 Ecublens • Switzerland • Tel. 41-21 694 34 00, Fax 41-21 694 34 09

Windows 95, Windows 98, Windows ME, Windows 2000, and Windows XP are trademarks of Microsoft Corporation.

